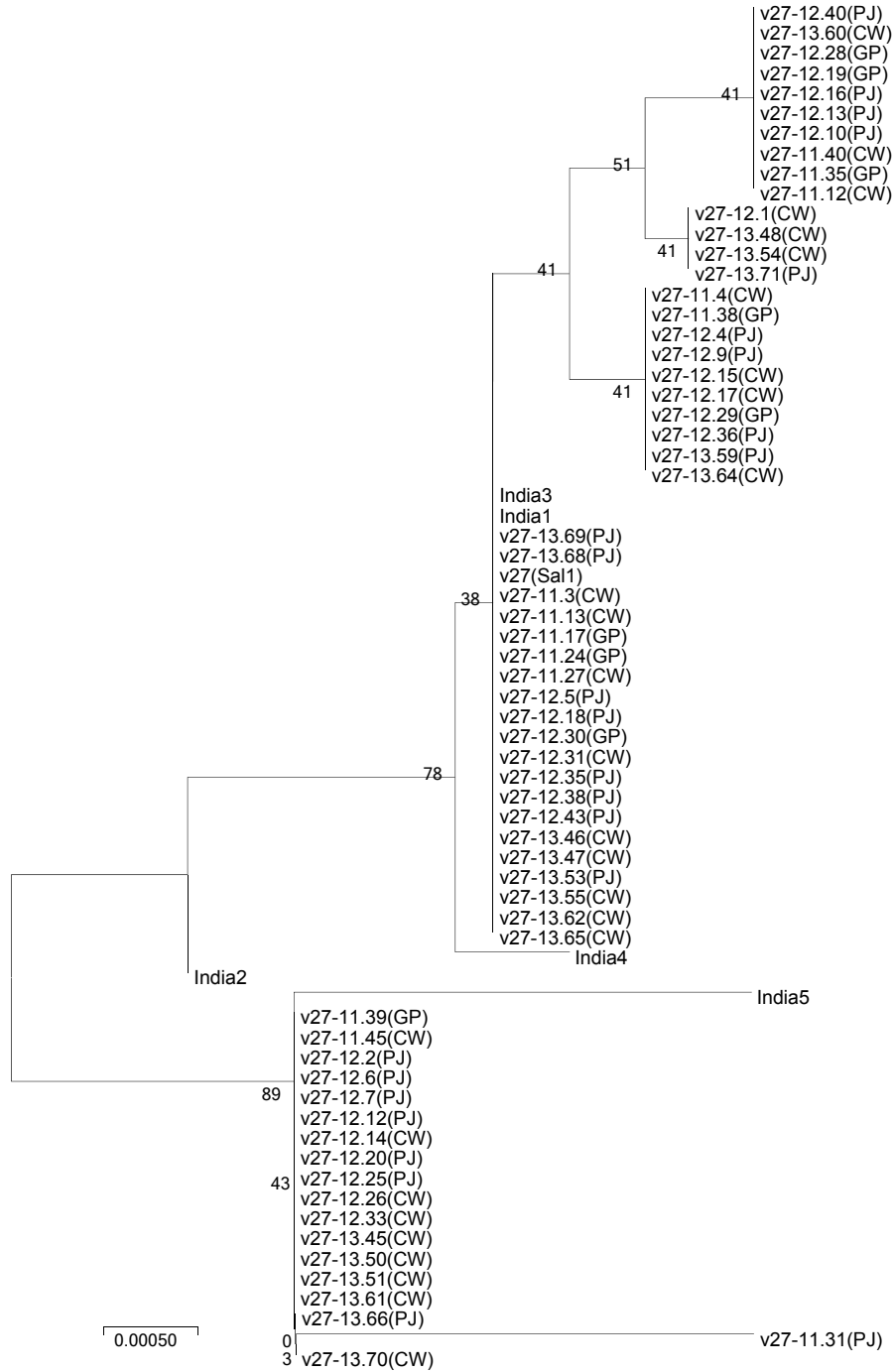
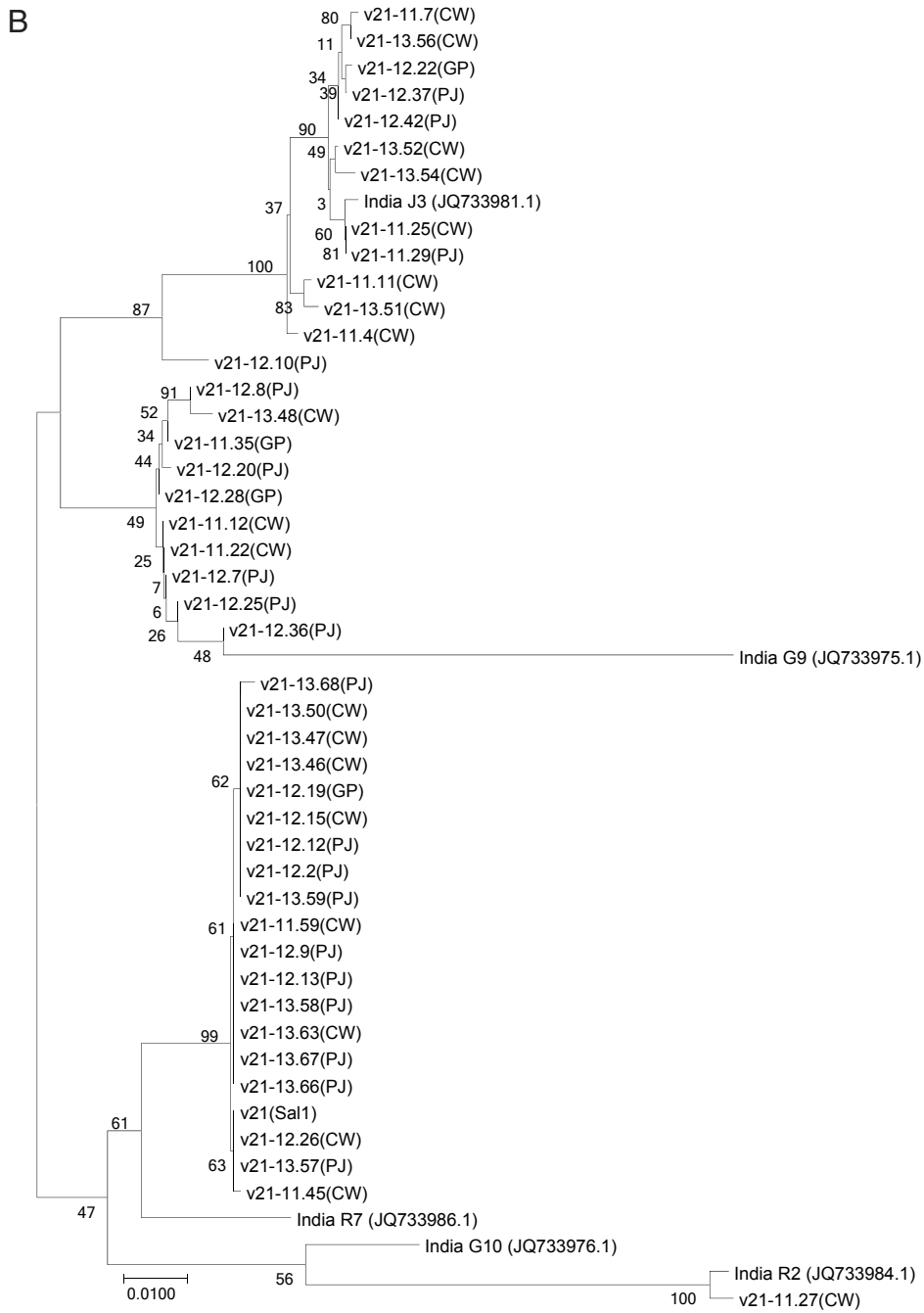


A

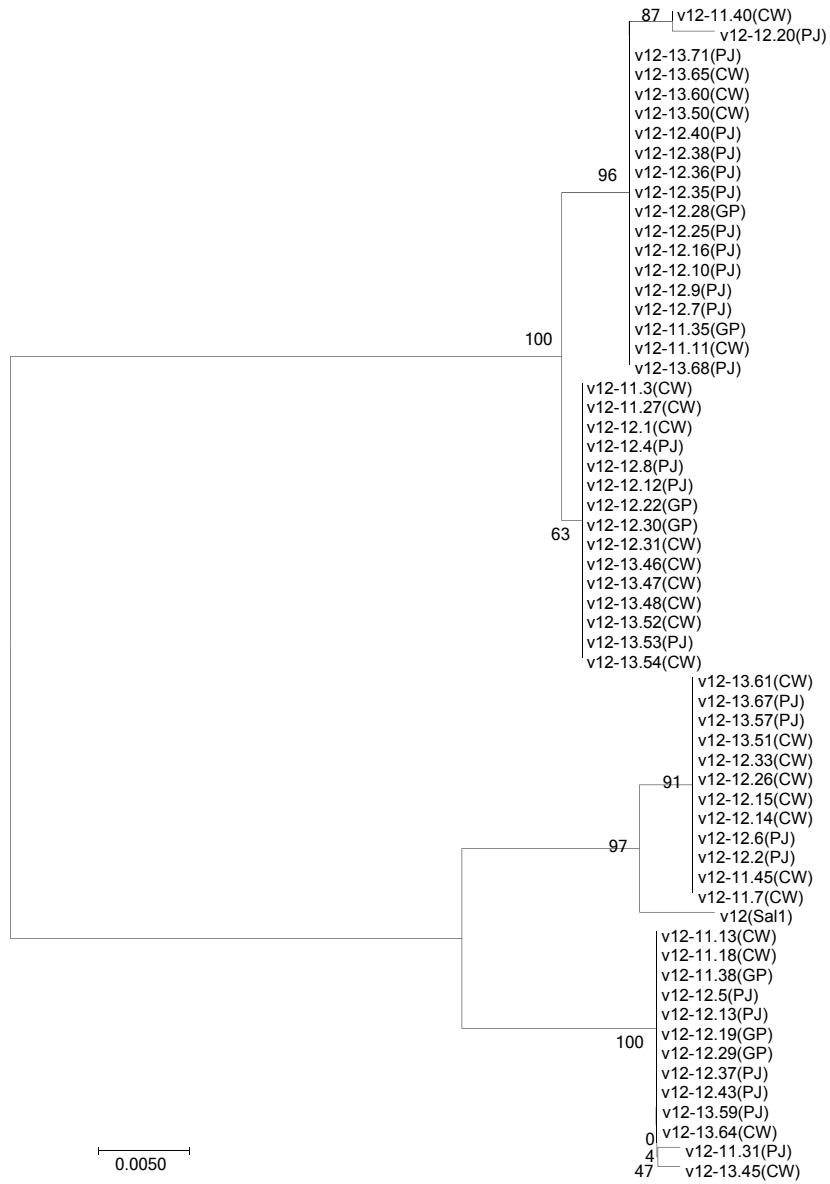


Supplement Fig. 3. The phylogenetic trees were conducted by minimum evolution method. The sum of branch lengths for each optimal tree were (A) *vir 27* = 0.01169659. (Continued to the next page)



Supplement Fig. 3. (Continued) The phylogenetic trees were conducted by minimum evolution method. The sum of branch lengths for each optimal tree were (B) *vir 21* = 0.17133662. (Continued to the next page)

C



Supplement Fig. 3. (Continued) The phylogenetic trees were conducted by Minimum Evolution method. The sum of branch lengths for each optimal tree were (C) $vir\ 12 = 0.09495926$.